



Total Solution Provider in Saw Device

SA881FM3

CDMA, Balanced RF-Rx SAW Filter
Revision 0: JULY 2007



- Electrical Characteristics
 - Package Dimensions
 - Testing Environment
 - Frequency Characteristics
-

SAWNICS Inc.

460 Cheonheung-ri, Seonggeo-eup, Cheonan-si, Chungcheongnam-do, 330-836 / Korea.
Tel: +82 41 550 9372 / Fax: +82 41 550 9399 / www.sawnics.com

□ Electrical Characteristics

Maximum Ratings

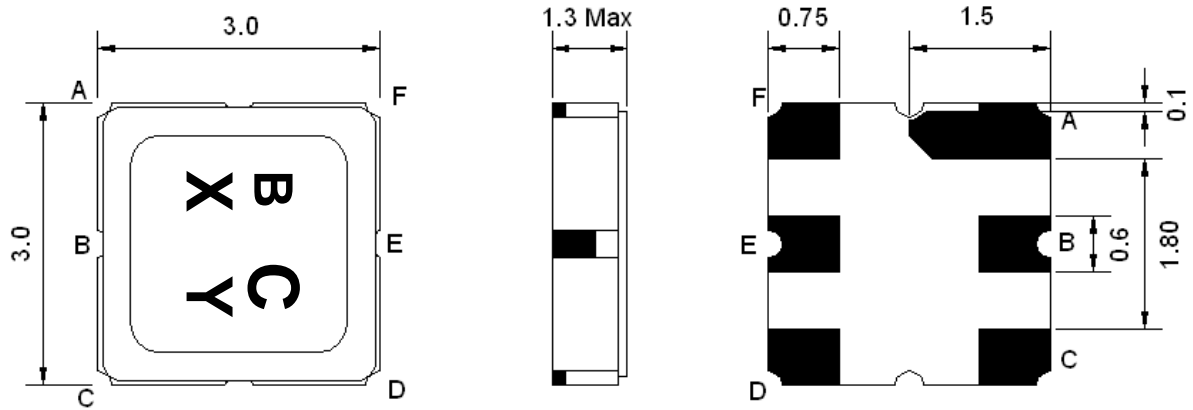
Parameters Description	Unit	Minimum	Typical	Maximum
Operating Temperature Range	°C	-30	-	+80
Storage Temperature Range	°C	-40	-	+85
Maximum DC Voltage	V	-	-	5
Maximum Input Power	dBm	-	-	5
Source Impedance (single ended) ⁽¹⁾	Ω	-	50	-
Load Impedance (balanced ended) ⁽¹⁾	Ω	-	200//56nH	-
Package type&size	M3			
Length x Width	mm ²	-	3.0 x 3.0	-
Height	mm	-	-	1.3

Electrical Specification

Parameters Description	Unit	Minimum	Typical	Maximum
Center Frequency (Fo)	MHz	-	881.5	-
Insertion Loss within 869.0 ~ 894.0 MHz	dB	-	2.2	3.0
Amplitude Ripple within 869.0 ~ 894.0 MHz	dB _{p-p}	-	0.8	1.5
Attenuation:				
D.C. ~ 824.0 MHz	dB	50	60	-
824.0 ~ 849.0 MHz	dB	35	44	-
924.0 ~ 970.0 MHz	dB	25	30	-
970.0 ~ 1300.0 MHz	dB	50	65	-
1300.0 ~ 2000.0 MHz	dB	40	55	-
2000.0 ~ 3000.0 MHz	dB	30	50	-
VSWR within 869.0 ~ 894.0 MHz	-	-	1.8	2.2

Notes : (1) No Matching Network .

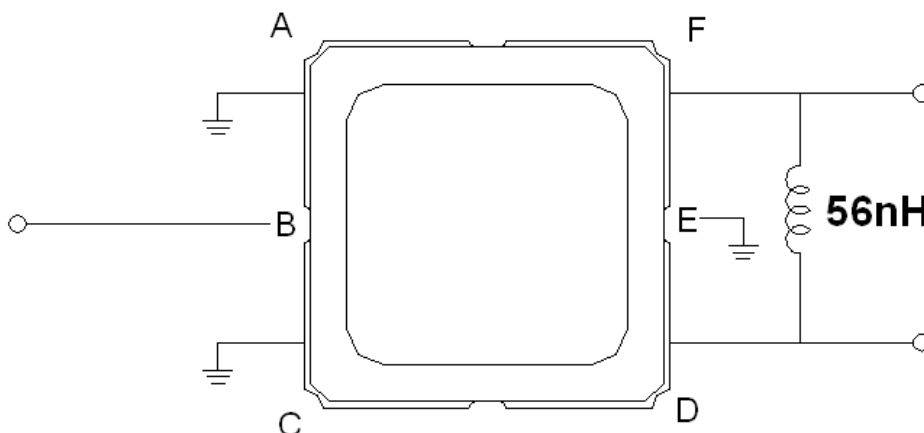
Package Dimensions



Marking Descriptions	
B	CDMA Application
C	Series Number
X	Date Code(Year)
Y	Date Code(Month)

Pin Description	
A, C, E	Ground
B	In
D, F	Out

Testing Environment

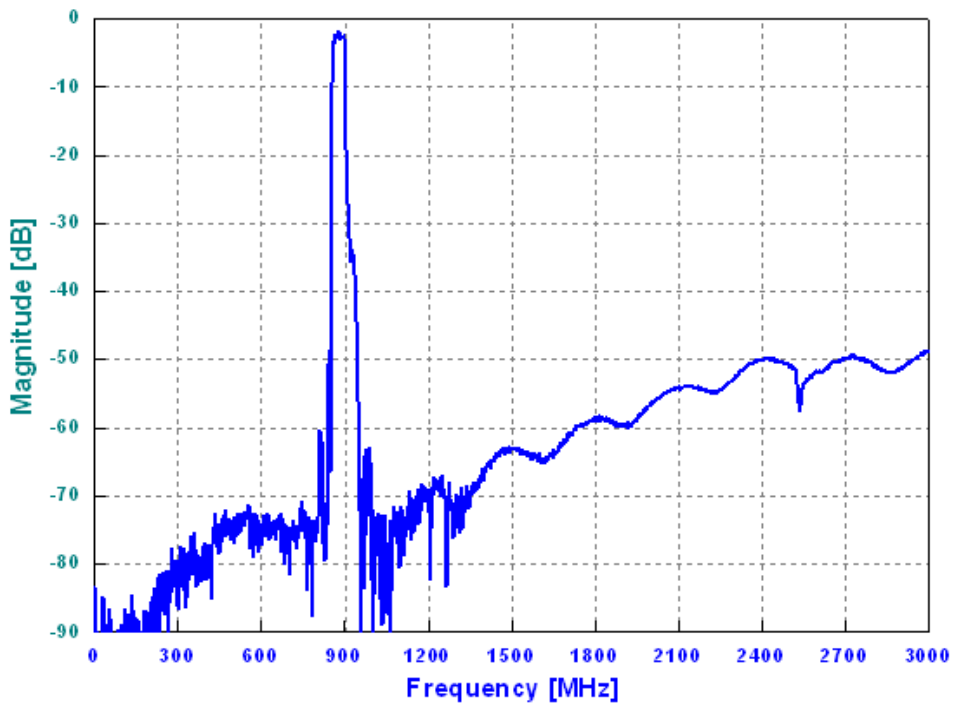
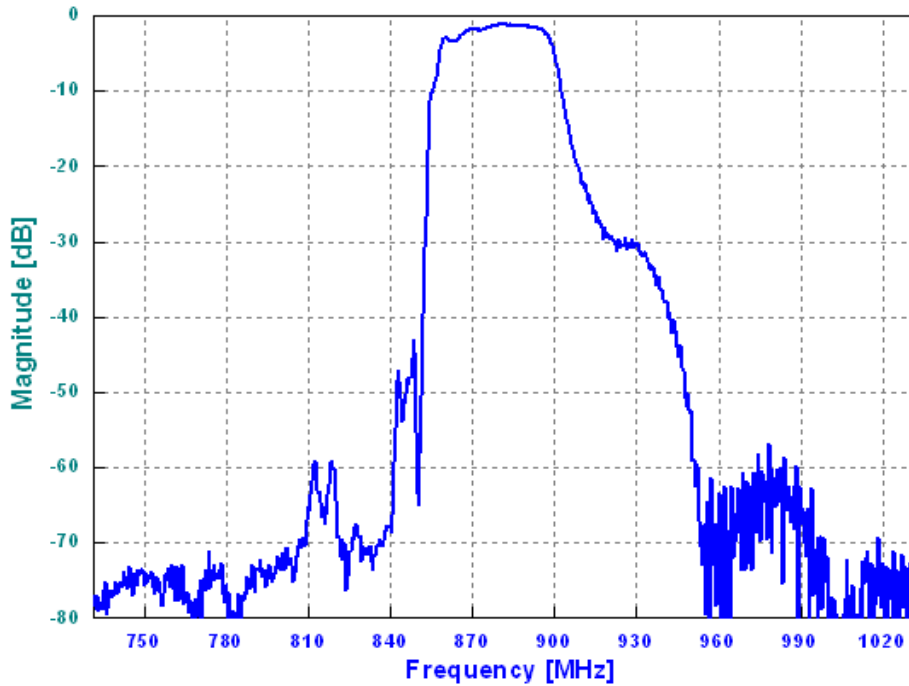


Source Impedance: 50 Ω

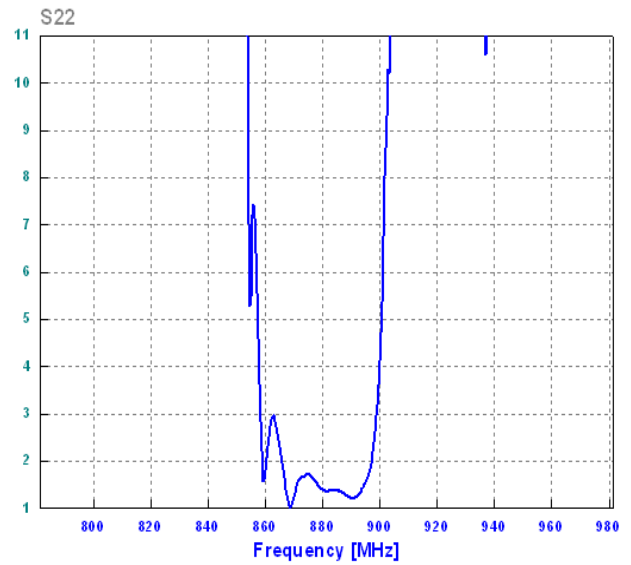
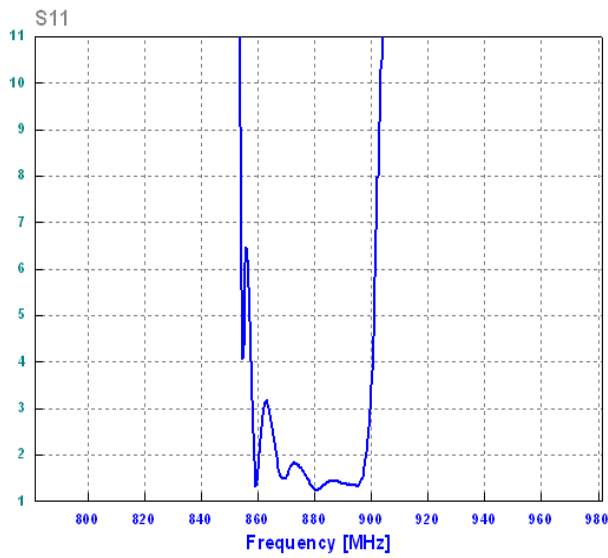
Load Impedance: 200 Ω

□ Frequency Characteristics

Frequency Response



VSWR



Smith Chart

